



Irvine  
Community  
Enterprise and  
Leisure Hub

---

**Client**

Taylor Maxwell

---

**Project Architect**

Anderson Bell + Christie  
Architects

---

**Brick type**

Carsington Cream

---

**Location**

Irvine, North Ayrshire

---

**Sector**

Public

---

The initial phase of a large-scale regeneration project featuring community sports facilities, office accommodation and an Enterprise Hub in Irvine, North Ayrshire, has been constructed with the use of 50,000 Carsington Cream bricks produced by Forterra in Measham exclusively for Taylor Maxwell.

The construction on Quarry Road, Irvine, houses the office headquarters of a local leisure company and work spaces for Business Gateway, who aim to support local entrepreneurs and business start-ups, encouraging local employment. It provides a gateway into the development that will include local indoor and outdoor sports facilities and multi-use community spaces. The building was designed to mark the development entrance, draw people into the site and set the construction standard for the phases to follow.

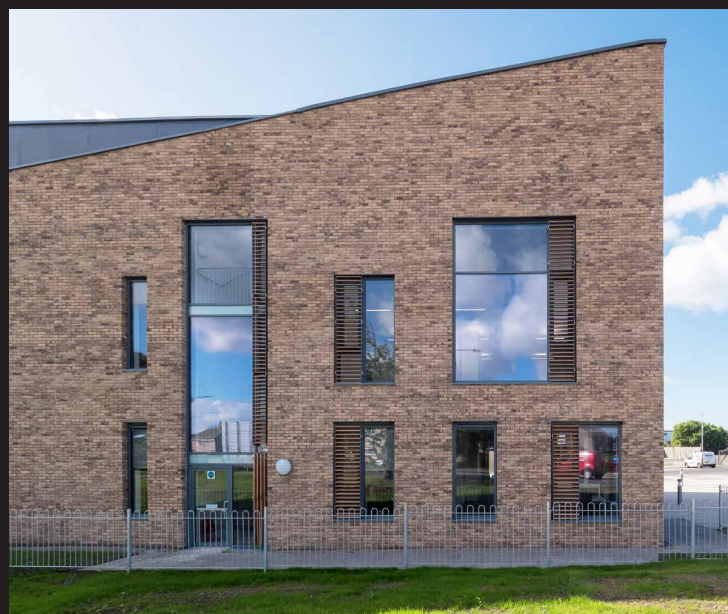
Andrew Martin, Sales Executive at Taylor Maxwell, said: "We were tasked with finding a suitable facing brick for Irvine Community Hub. With a budget to adhere to and a remit to provide a buff/cream coloured brick with a traditional appearance, the Carsington Cream Facing Brick was ideal.

"This brick type is part of a commitment to certain product lines manufactured in the UK and mainland Europe that Taylor Maxwell makes to provide a 'Select' range of brick types. This provided Clark Contracts with a commitment on price and availability for a soft mud manufactured brick with the technical qualities needed for the Scottish climate."

Steven Nicolson, Forterra's Area Sales Manager for Scotland, said: "The Carsington Cream brick is a hand-made, low water absorbency brick that was used here to combine with the modern aspect of the building and to complement the surrounding buildings."

Nick Shepherd, Architectural Assistant at Anderson Bell + Christie, said: "Forterra and Taylor Maxwell's Carsington Cream brick was used to contrast with the residential context and establish the building as a landmark. The tone of the brick was selected to harmonise with the timber cladding, as well as the timber louvres within the window openings which accentuate the texture of the brick."

Forterra nominated the project for the 2018 Brick Awards, in the Public category.



5 Grange Park Court  
Roman Way  
Northampton  
NN4 5EA

Tel: +44 (0)1604 707 600  
[forterra.co.uk](http://forterra.co.uk)