



Norfolk House Phase 2 Case Study

Project Architect
Falconer Chester Hall

Brick type
Farmstead Antique

Location
Falkner Street,
Liverpool

Sector
Residential

Supplier
Lancashire Brick

The Challenge

Nearly 400,000 Forterra-supplied bricks have been used to construct a striking new nine-storey block of apartments in the Baltic Triangle area of Liverpool.

Phase 2 of Norfolk House, on Simpson Street, is made up of 100 affordable apartments aimed at young professionals and students, and its architecture creates a link between the Georgian red brick warehouses of the area and the modern aluminium and glass buildings in the city centre.

The Solution

Forterra's recently launched high quality Farmstead Antique facing bricks were manufactured at the firm's Accrington brickworks, and Norfolk House Phase 2 was the first large-scale project to utilise them.

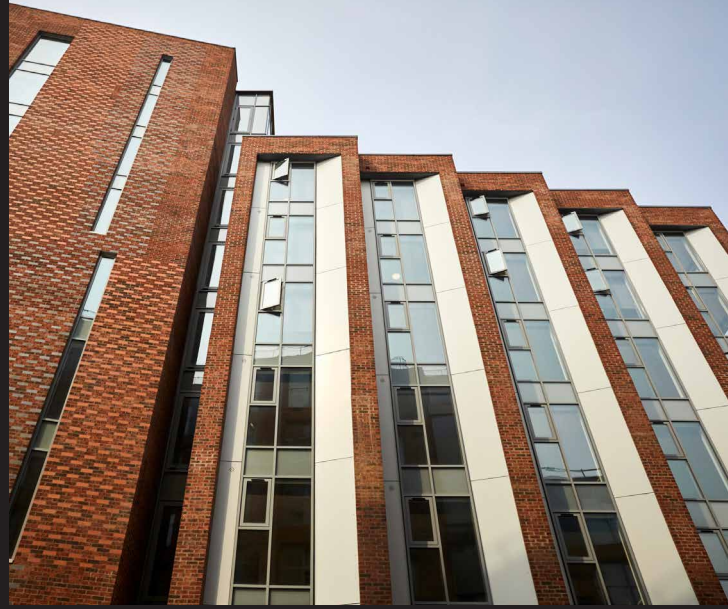
Architect James Tartt said "The Baltic is a trendy, up-and-coming cultural quarter of Liverpool set in the city's historic docklands, and we wanted the design and brickwork of this scheme to reflect the renovated warehouses of the area, some of which date back to the 18th Century.

"To this end, we had sample walls constructed at the site in the early stages before building work began, where we tested different types of brick and mortar to ensure they matched the surrounding architecture as closely as possible. Forterra's Farmstead Antique bricks were ideal for this job."

The Benefits

Ian Shard, Commercial Director of Lancashire Brick, who specified the job, said, "We knew we wanted quality new bricks which matched the area, and using Forterra's handy online Brick Matching app we were able to find the closest brick type possible for our clients."

Forterra nominated the finished project for the 2018 Brick Awards, in the Large Housing Development category.



5 Grange Park Court
Roman Way
Northampton
NN4 5EA

Tel: +44 (0)1604 707 600
forterra.co.uk