



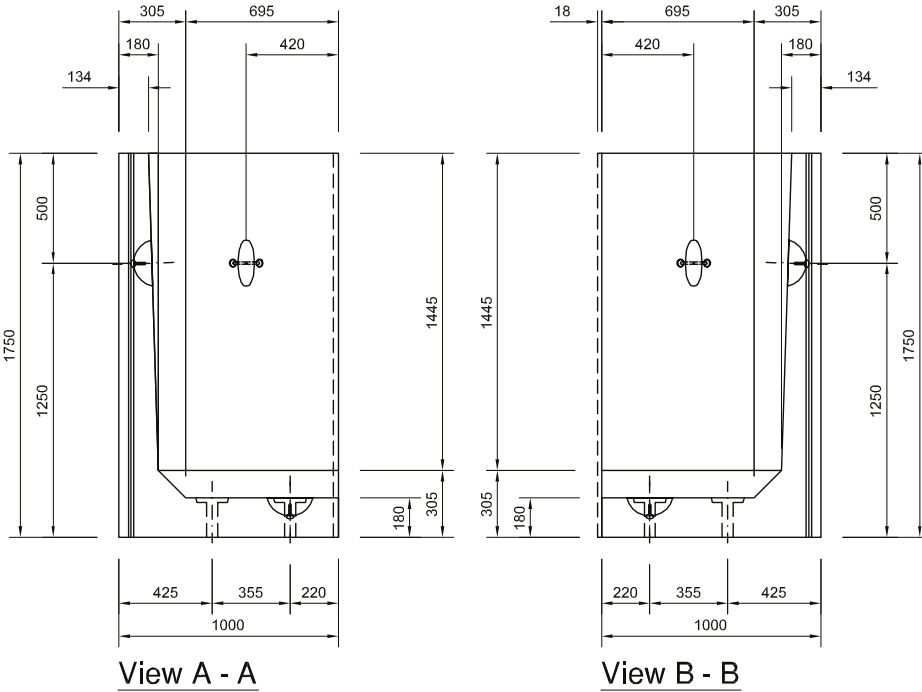
BISON PRECAST

a Forterra brand

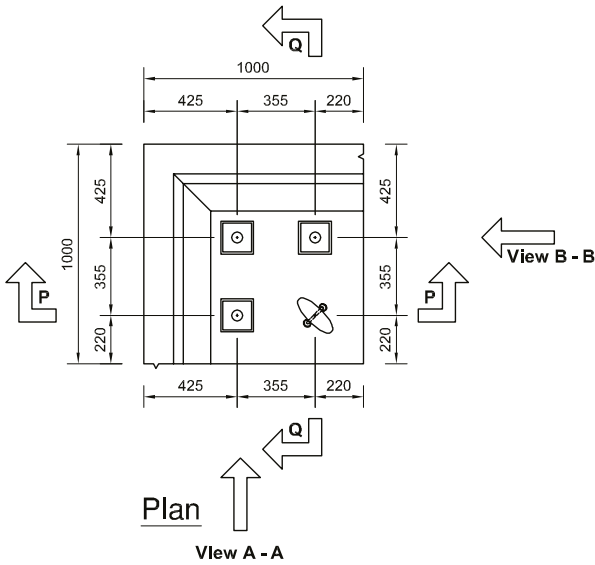
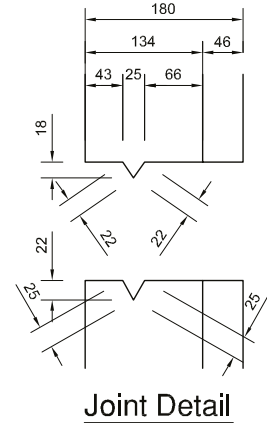
1.75M RETAINING WALL

Corner Layout - Drawing number: 50

Note: Do not scale from this drawing. If in doubt, please ask for confirmation of any dimension.



- Height:** 1750mm
- Width:** 1000mm
- Depth:** 1000mm
- Weight:** 1.63t
- Embedment:** 220mm



NOTES:

CONCRETE GRADE - 50/60
 COVER TO REINFORCEMENT - 45mm Nominal (Minimum 40mm)

rev	amendment	by	date
-	-	-	-
BISON PRECAST		fc	
BISON PRECAST		:state ©	
job Retaining Wall			
title Retaining Wall - 1750mm High Corner Unit			
Volume 0.651 cu.m. Weight 1.63 tonnes.			
date	12/12/2012	job no	HBP-RW
scale	1:25	drw no	50
drawn	D. Chamberlain	rev	-
checked	-		



BISON PRECAST

a Forterra brand

1.75M RETAINING WALL

Ancillary Items

Note: Do not scale from this drawing. If in doubt, please ask for confirmation of any dimension.

Loose items schedule: per 1.75m unit

No.	Item
3	M20 (Grade 8.8) Galv Althread x 450lg
3	M20 Galv Nuts
3	100 x 100 x 10thk Galv Plate washer (Ref: PW3)

Grouted in using C32/40 non-shrink grout

All loose items available direct from Bison Precast. Please enquire for further details.

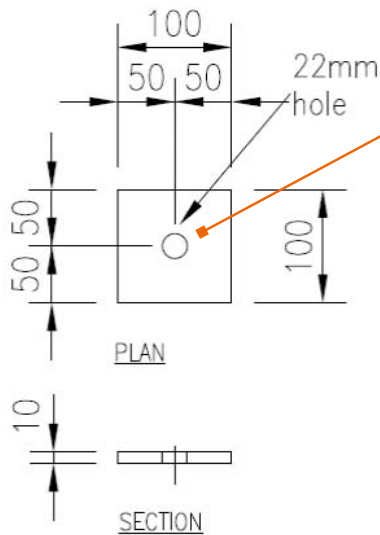
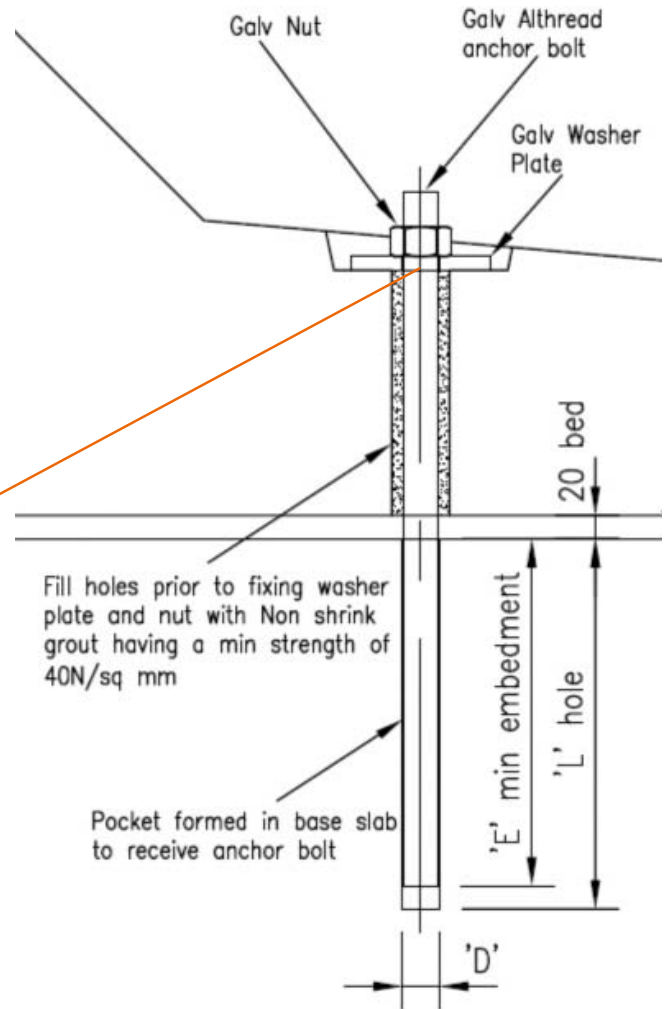


Plate Washer PW3



Anchor Bolt Detail