



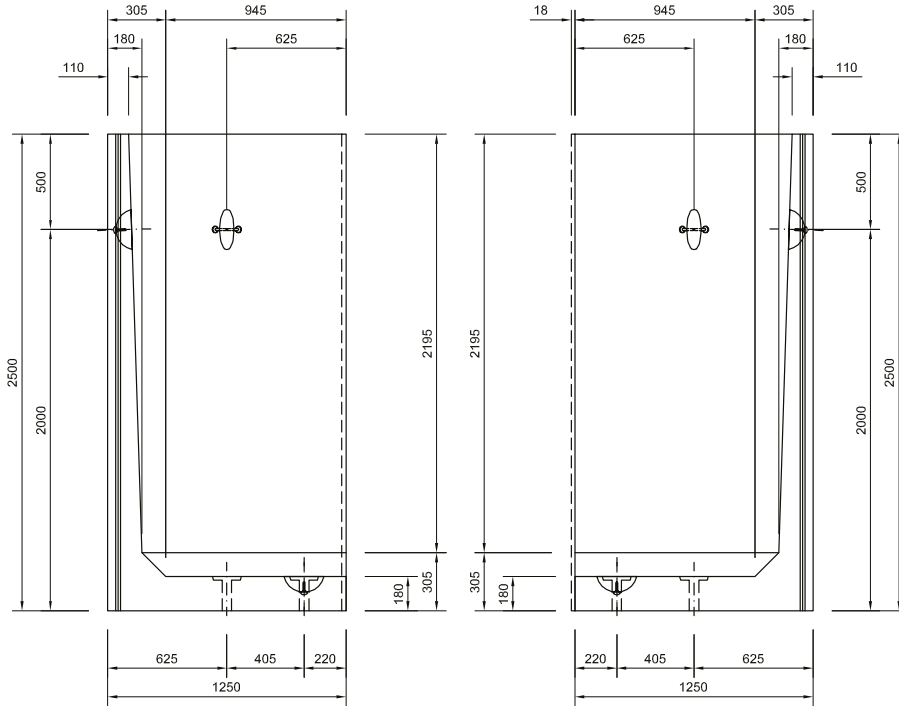
**BISON PRECAST**

a Forterra brand

# 2.50M RETAINING WALL

Corner Layout - Drawing number: 30

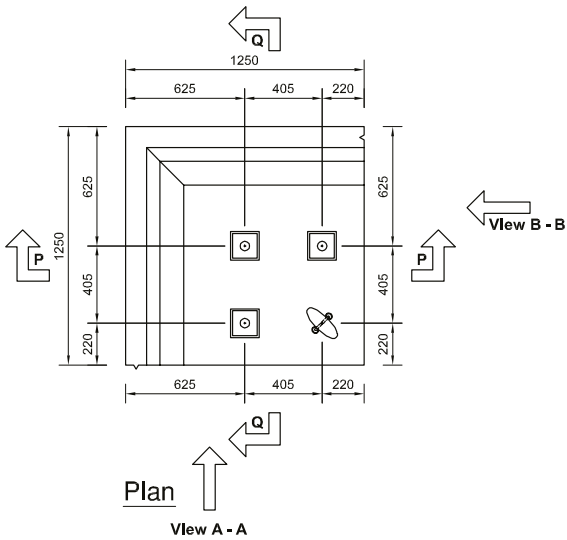
Note: Do not scale from this drawing. If in doubt, please ask for confirmation of any dimension.



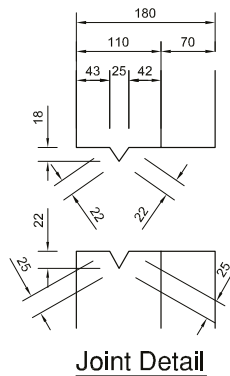
View A - A

View B - B

Height: 2500mm  
 Width: 1250mm  
 Depth: 1250mm  
 Weight: 2.75t  
 Embedment: 250mm



Plan View A - A



Joint Detail

**NOTES:**

CONCRETE GRADE - 50/60  
 COVER TO REINFORCEMENT - 45mm Nominal (Minimum 40mm)

rev	amendment	by	date
-	-	-	-
<b>BISON PRECAST</b>		<b>fc</b>	
<b>BISON PRECAST</b>		state ©	
job Retaining Wall			
title Retaining Wall - 2500mm High Corner Unit			
Volume 1.10 cu.m. Weight 2.75 tonnes.			
date	12/12/2012	job no	HBP-RW
scale	1:25	drw no	30
drawn	D. Chamberlain	rev	-
checked	-		



**BISON PRECAST**

a Forterra brand

# 2.50M RETAINING WALL

Ancillary Items

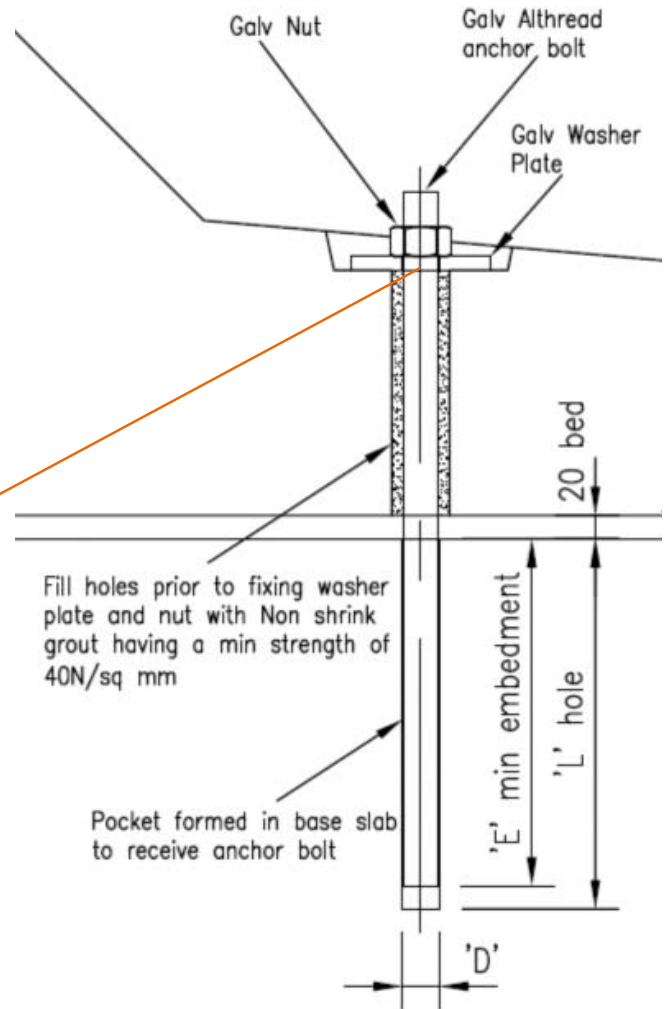
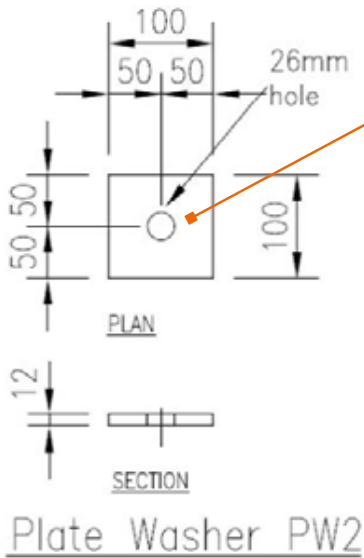
Note: Do not scale from this drawing. If in doubt, please ask for confirmation of any dimension.

## Loose items schedule: per 2.50m unit

No.	Item
3	M24 (Grade 8.8) Galv Althread x 490lg
3	M24 Galv Nuts
3	100 x 100 x 12thk Galv Plate washer (Ref: PW2)

Grouted in using C32/40 non-shrink grout

All loose items available direct from Bison Precast. Please enquire for further details.



Anchor Bolt Detail