



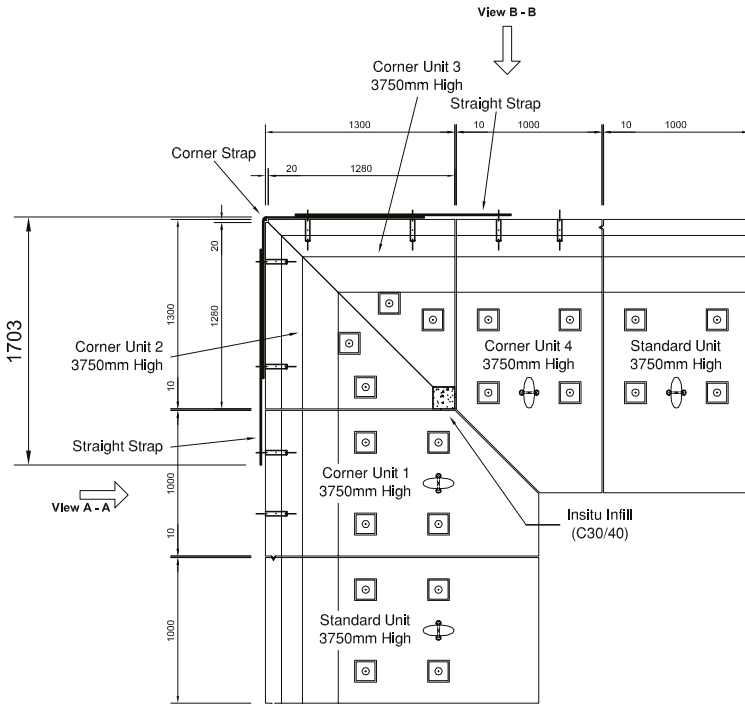
BISON PRECAST

a Forterra brand

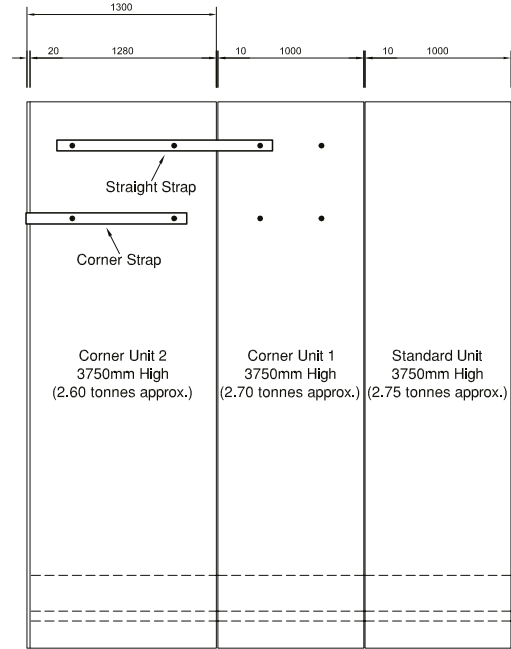
3.75M RETAINING WALL

Corner Layout - Drawing number: 100

Note: Do not scale from this drawing. If in doubt, please ask for confirmation of any dimension.



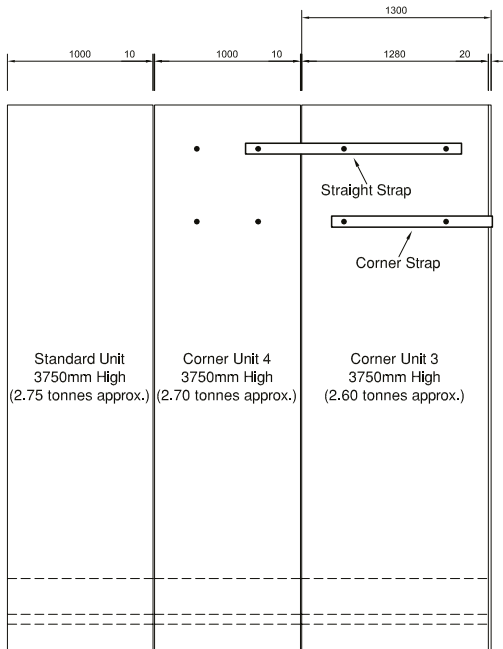
Corner Section Plan



View A - A

- Height:** 3750mm
- Width:** 3300mm
- Depth:** 3300mm
- Total weight:** 16.1t
- Embedment:** 375mm

See individual unit details above for individual weights.



View B - B

A	Minor amendments.	DC	11/03/13
rev	amendment	by	date
BISON PRECAST		fc	
BISON PRECAST		:state ©	
job Retaining Wall			
title Retaining Wall - 3750mm High Corner Layout			
date 31/01/2013	job no HBP-RW		
scale 1:25	drwn D. Chamberlain		
checked -	drg no 100	rev A	



BISON PRECAST

a Forterra brand

3.75M RETAINING WALL

Ancillary Items

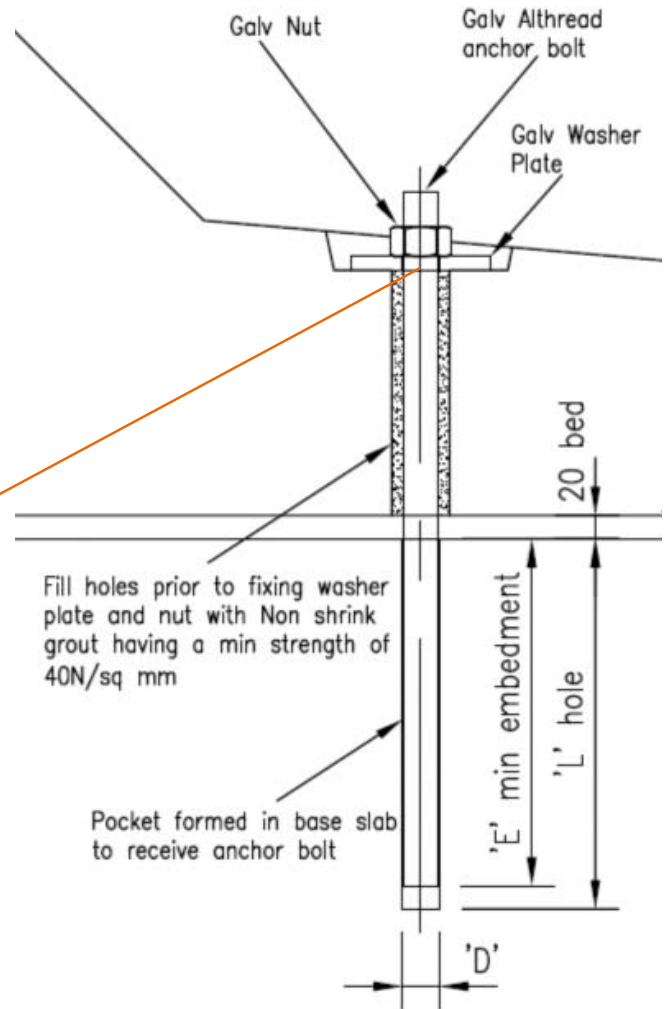
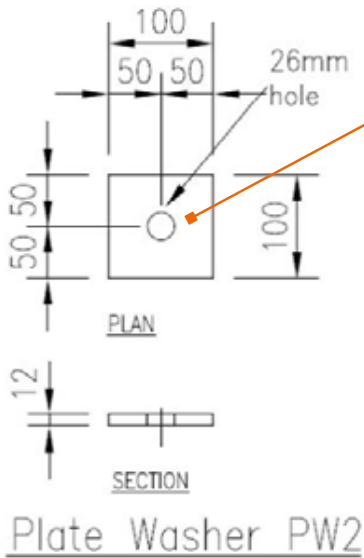
Note: Do not scale from this drawing. If in doubt, please ask for confirmation of any dimension.

Loose items schedule: per 3.75m unit

No.	Item
20	M24 (Grade 8.8) Galv Althread x 6951g
20	M24 Galv Nuts
20	100 x 100 x 12thk Galv Plate washer (Ref: PW2)

Grouted in using C32/40 non-shrink grout

All loose items available direct from Bison Precast. Please enquire for further details.



Anchor Bolt Detail